



3 Bed House

6 Angelica Close
Littleover
Derby
DE23 1NJ

£1,325 Per Calendar Month

Fle
&

Fletcher
& Company

6 Angelica Close Derby DE23 1NJ



- THREE Bedroom Property With THREE Bathrooms
- Master Bedroom With En-Suite Shower Room & In-Built Storage
- Garage With Driveway Parking
- Groundfloor Bedroom With Utility Room AND A Shower Room
- Open Plan Living
- Family Bathroom With Separate Shower Cubicle
- Superb Location Tucked Off Angelica Close
- Close To Local Amenities
- Fast Access To The Ring Road And Major Road Networks
- Long Term Lets Ideal

A well presented THREE bedroom, THREE bathroom, three storey mews home, offering spacious and versatile accommodation in a sought after location.

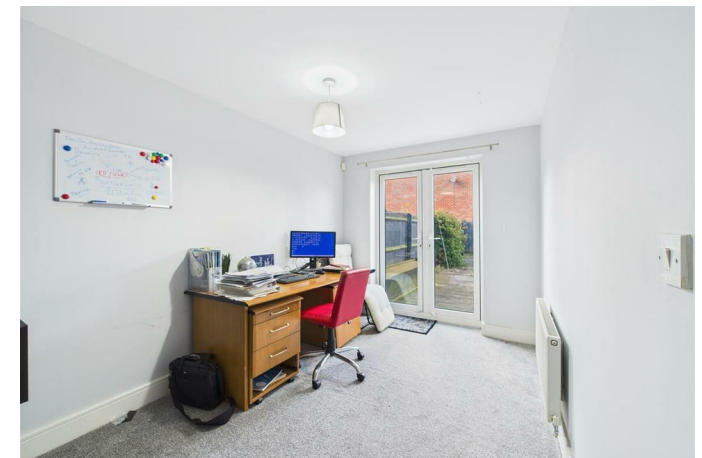
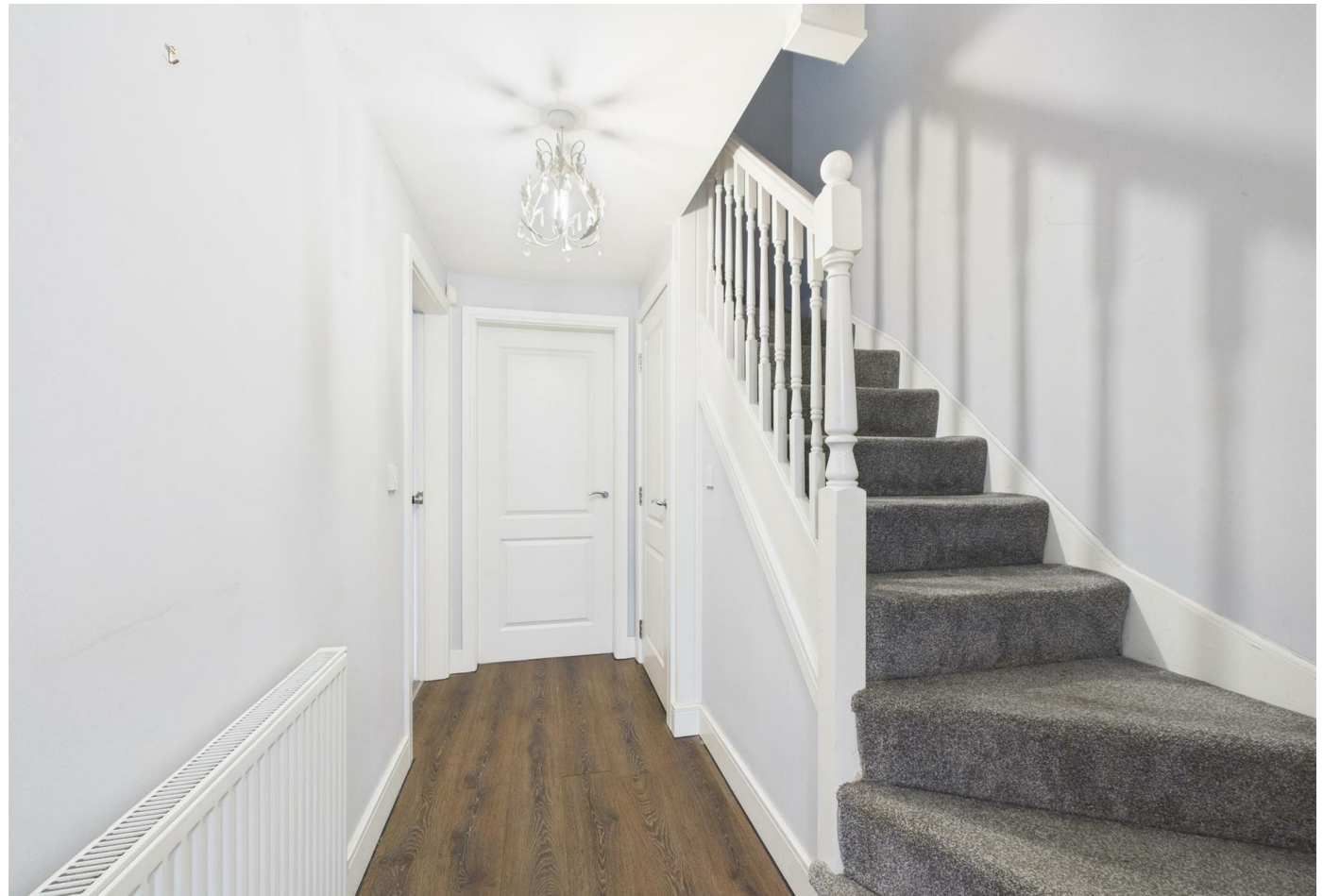
Finished to a good standard throughout, this modern home combines stylish interiors with practical living space, making it an excellent choice those looking for space and flexibility.

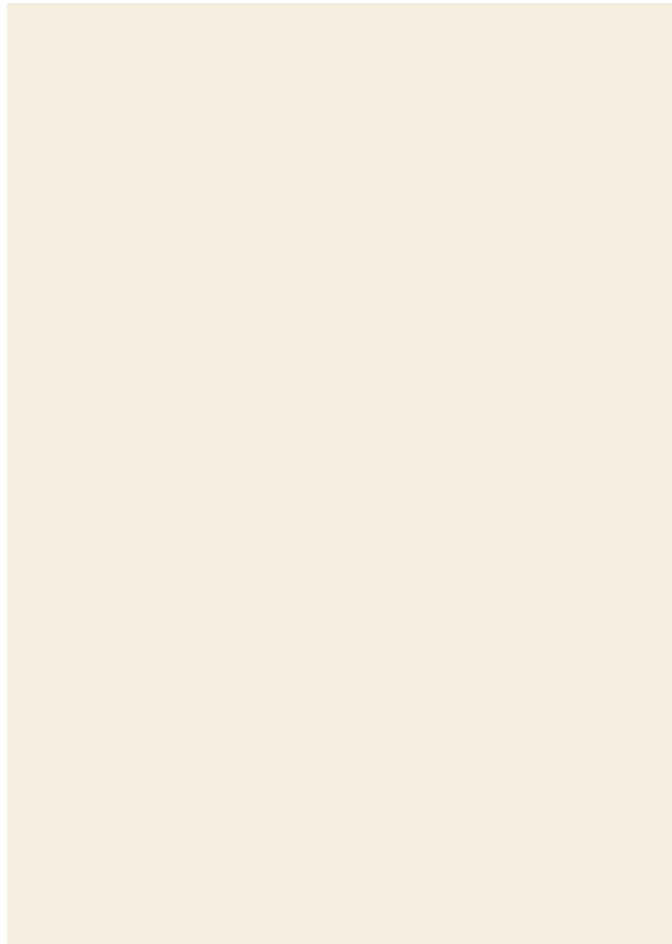
The ground floor welcomes you with a bright entrance hall leading to a contemporary shower room and a versatile third bedroom, which could also be used as a home office, snug or playroom. French doors open directly onto the rear garden, creating an ideal indoor/outdoor living space. A separate utility room provides additional storage and laundry facilities.

Occupying the entire first floor, the impressive open plan living space has been designed with modern living in mind. The generous lounge enjoys plenty of natural light, while the adjoining dining area features French doors with a Juliet balcony overlooking the garden. The stylish fitted kitchen is well equipped with a range of contemporary units and integrated appliances, offering both functionality and an attractive finish.

The second floor hosts two excellent double bedrooms, including a spacious principal bedroom with built in wardrobes and a modern en-suite shower room. A luxurious family bathroom serves the remaining accommodation and features both a separate shower and a bath, providing the best of both worlds.

Externally, the property benefits from a driveway providing off road parking, an integral garage and a landscaped rear garden designed for easy maintenance. The attractive outdoor space features a lawn, decked seating area and secure

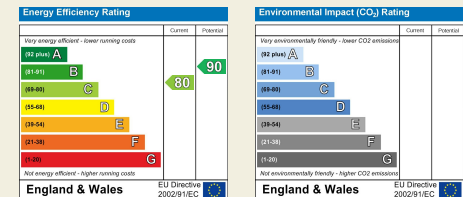




Duffield House
 Town Street
 Duffield
 Derbyshire
 DE56 4GD

T: 01332 843390

E: duffield@fletcherandcompany.co.uk
 www.fletcherandcompany.co.uk



Fletcher
 & Company

These particulars do not constitute an offer or a contract neither do they form part of an offer or contract. The vendor does not make or give and Messrs. Fletcher & Company nor any person employed has any authority to make or give any representation or warranty, written or oral, in relation to this property. Whilst we endeavour to make our sales details accurate and reliable, if there is any point which is of particular importance to you, please contact the office and we will be pleased to check the information for you, particularly if contemplating travelling some distance to view the property. None of the services or appliances to the property have been tested and any prospective purchasers should satisfy themselves as to their adequacy prior to committing themselves to purchase.